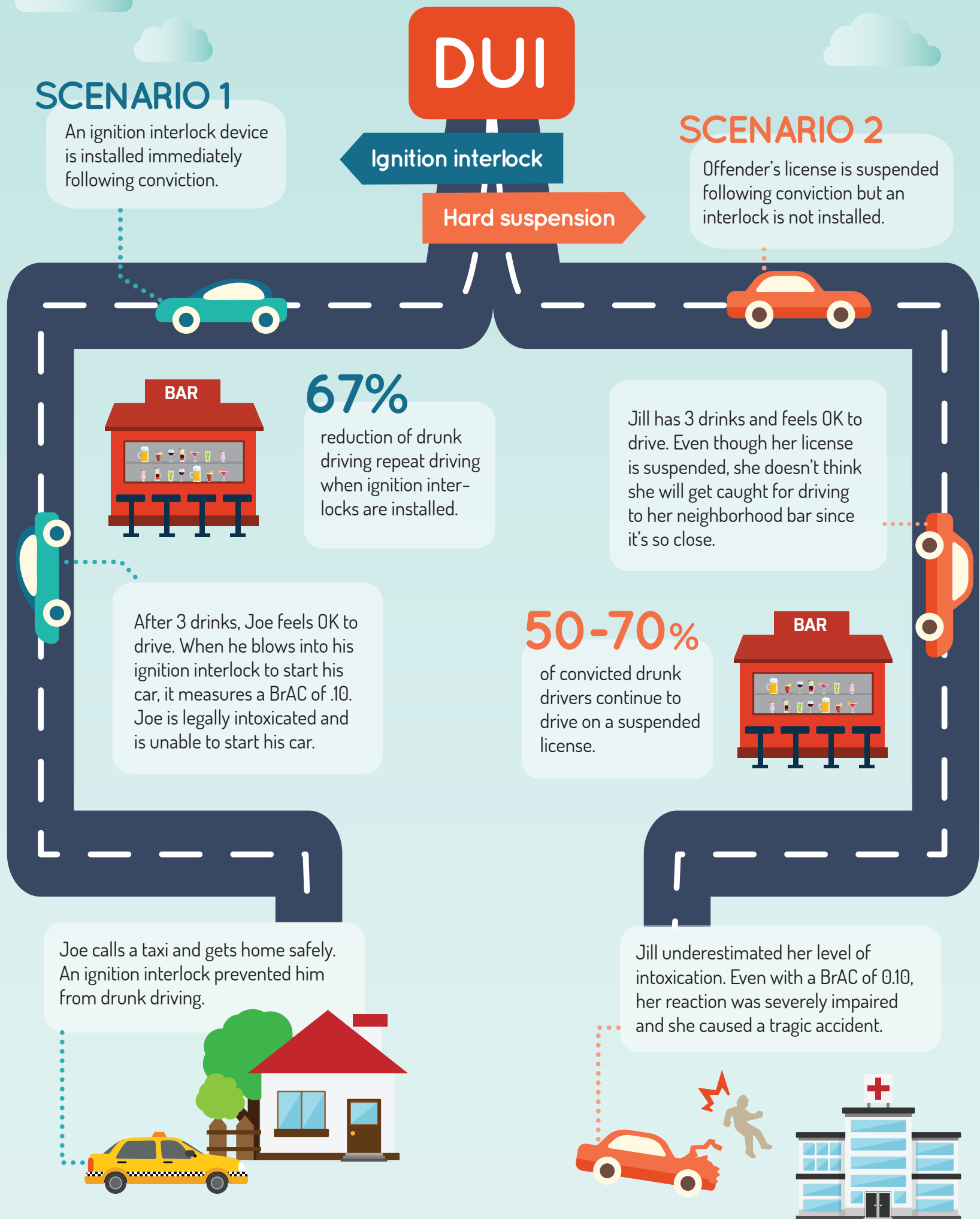


THE SAFEST PATH

Ignition interlocks vs. license suspension



THE BEST CHOICE

Ignition interlock devices are critical in preventing repeat drunk driving incidences. Studies are consistent in showing how ineffective license suspensions (hard times) are following a drunk driving conviction. An ignition interlock device is the only mechanism available that prevents a driver from starting their vehicle while intoxicated.



Intoxalock

www.Intoxalock.com | (888) 283-6148