



CALL FOR FREE QUOTE!

Regain your license in Wisconsin

with a state certified ignition interlock

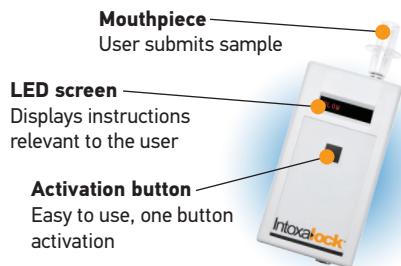
HOW CAN I GET MY LICENSE BACK?

If you are reading this brochure, it is likely that you or a loved one has been pulled over for Operating While Intoxicated (OWI). Getting an ignition interlock device installed in your vehicle is an important step in regaining your license in Wisconsin. This brochure will take you through all the necessary steps based on your offense and will assist you in getting back on the road quickly and legally.*

*State laws can change at any time. The information in this brochure is only a guideline. For the most up to date information, visit www.dot.wisconsin.gov/safety/motorist/drunckdriving

WHAT IS AN IGNITION INTERLOCK?

An ignition interlock device (IID) integrates breath alcohol testing with your vehicle's ignition system. Prior to starting your vehicle, you will need to submit a breath sample into the hand held portion of the device that tests for the presence of alcohol. If your Breath Alcohol Concentration (BrAC) is below Wisconsin's ignition interlock limit (0.02), your vehicle will start. If alcohol is detected, your vehicle will not start until a passing sample has been provided.



ABOUT INTOXALOCK

Intoxalock has been manufacturing ignition interlocks for over 20 years. We were the first company to use fuel cell technology and continue to be an industry leader in reliability, customer service and technology.

- Over 90,000 customers served annually
- Over 1,800 service centers nationwide
- 20 years of industry leadership



WISCONSIN OWI LAWS

You can be arrested for OWI in Wisconsin if you have a Prohibited Alcohol Concentration (PAC), or a detectable amount of a restricted controlled substance, in your blood. If you are convicted of your first OWI offense, you will be fined and your license will be revoked for six months. Penalties can be more severe based on your Blood Alcohol Content (BAC) level at the time of arrest and for second and subsequent convictions.

You may be subject to:

- Installation of an Ignition Interlock Device (IID)*
- Minimum one year license revocation

*Required for all vehicles owned or registered in your name, unless specifically exempted by court

WISCONSIN OCCUPATIONAL LICENSE

A Wisconsin Occupational License (OL) is a restricted license and a requirement of an OWI offense. An OL limits you to where and when you can drive. Visit the Wisconsin Department of Transportation's website, wisconsin.gov to find out if you are eligible for an OL. You may apply for an OL at your nearest Department of Motor Vehicle (DMV) Service Center (excluding express offices). Allow for two hours to process an application.

To apply, you will need to:

- Complete a Wisconsin Driver License Application, form MV3001
- Complete an Application for Occupational Operator License, form MV3027
- Proof of completed alcohol assessment and participation in a driver safety plan (two or more OWI convictions)
- Complete necessary tests, including vision screening
- Provide an SR22 insurance certificate
- Provide proof of identity and legal presence
- Pay all court fees and a \$50 IID filing fee
- Install an IID* in any vehicle you operate (if court ordered)

*Your IID provider will provide proof of installation to the DMV

IGNITION INTERLOCK REQUIREMENTS

An IID is required for the following:

- All OWI offenses with a BAC of 0.15 or higher
- All repeat OWI offenses
- All refusals to submit to BAC testing

An IID requirement is ordered for a minimum of one year and the court can require immediate installation.

NOTE: An IID restriction does not apply to your operating privileges until you are issued an OL or reinstate your operating privileges. This means you can no longer “wait out” your IID requirement.



WE PROUDLY MAINTAIN A 4 ½
STAR CUSTOMER SATISFACTION
RATING ON TRUSTPILOT.

OWI OFFENSE

First offense (BAC less than 0.15):

- Installation of an IID is not required
- Suspension length: 6-9 months
- May apply for an OL immediately

First offense (BAC of 0.15 or higher):

- Subject to court-ordered IID
- Suspension length: 6-9 months
- May apply for an OL immediately

Second offense:

- Subject to court-ordered IID
- Suspension length: 12-18 months
- May apply for an OL after 45 days

Third and subsequent offenses:

- Subject to court-ordered IID
- Suspension length: 2-3 years
- May apply for an OL after 45 days

NOTE: The waiting period to apply for an OL may be longer depending on the violation date, an implied consent refusal, negligent homicide, great bodily harm and multiple offenses within five years.



CALIBRATIONS

The state of Wisconsin requires that all ignition interlock devices be calibrated every 60 days. A calibration consists of exchanging your current device for a new one. During calibration, information will be downloaded and forwarded to the proper monitoring authority.

Intoxalock auto-calibrations

Intoxalock offers its customers auto-calibrations in the state of Wisconsin. When your current device is due for calibration, the LED screen will display a message alerting you it is time to exchange devices. Intoxalock will automatically send a new one to your selected service center. You simply need to visit your service center during the allotted calibration period and a technician will quickly exchange the device.

CERTIFIED LOCATIONS

Intoxalock has over 135 authorized service center locations throughout the state. **No other ignition interlock provider has more service centers in Wisconsin.**

Visit www.Intoxalock.com/Find-an-Installation-Location and enter your zip code to find the service center locations nearest to you.

LAST YEAR, INTOXALOCK
HELPED OVER 90,000 DRIVERS
GET BACK ON THE ROAD SAFELY
AND RESPONSIBLY.



INTOXALOCK IS THE FASTEST WAY TO REGAIN YOUR LICENSE

5 REASONS TO CALL INTOXALOCK

- 1 Wisconsin's #1 ignition interlock provider
- 2 Lowest monthly lease rates
- 3 Largest service center network in Wisconsin
- 4 Auto-calibrations ensure customer convenience
- 5 Second-to-none in customer service*

*Given A+ rating from Better Business Bureau and the only ignition interlock company to receive 4-1/2 stars from Trustpilot (Independent site)

WHAT YOU CAN EXPECT

- A patient and friendly customer service agent
- Specialists in Wisconsin regulations
- Affordable pricing
- Most reliable technology in the industry
- 24/7 customer support

Call! **(888) 283-6148** Hablamos Español

Experts in Wisconsin regulations are ready to answer your questions.

To learn more about the Wisconsin ignition interlock program scan this QR code or visit www.IntoxalockIID.com/WI



Intoxalock[®]
Helping people to live and drive responsibly

