



CALL FOR FREE QUOTE!

Regain your license in Oklahoma

with a state certified ignition interlock

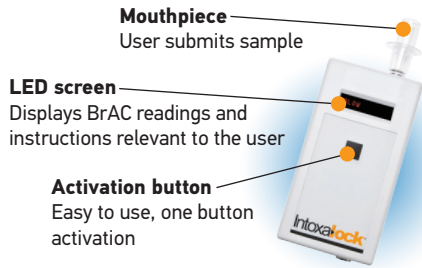
HOW CAN I GET MY LICENSE BACK?

If you are reading this brochure, it is likely that you or a loved one has been pulled over for a drug or alcohol related driving offense. Getting an ignition interlock device installed in your vehicle is an important step in regaining your license in Oklahoma. This brochure will take you through all the necessary steps based on your offense and will assist you in getting back on the road quickly and legally.*

*State laws can change at any time. The information in this brochure is to be used as a guideline. For the most up-to-date information, visit ok.gov/bot/ignition_interlock

WHAT IS AN IGNITION INTERLOCK?

An ignition interlock device (IID) integrates breath alcohol testing with your vehicle's ignition system. Prior to starting your vehicle, you will need to submit a breath sample into the hand held portion of the device that tests for the presence of alcohol. If your Breath Alcohol Concentration (BrAC) is below Oklahoma's ignition interlock limit (0.02), your vehicle will start. If alcohol is detected, your vehicle will not start until a passing sample has been provided.



ABOUT INTOXALOCK

Intoxalock has been manufacturing ignition interlocks for over 20 years. We were the first company to use fuel cell technology and continue to be an industry leader in reliability, customer service and technology.

- Over 90,000 customers served annually
- Over 1,800 service centers nationwide
- 20 years of industry leadership



FIRST OFFENSE*

If you are arrested for a 1st drug or alcohol related driving offense, your license will be suspended. If your offense is considered non-aggravated (BrAC below .15% and full submission to all tests), you may apply for a Modified License for six months. If approved for your Modified License, you have the choice of installing an ignition interlock device in your vehicle to regain your driving privileges and receive a Modified License.

If your BrAC is above .15% or if you failed to submit to any of the tests you were asked to take, your offense will be considered aggravated. You may apply for a Modified License for six months. Following that, you will have a Condition of Reinstatement period of 18 months, requiring the installation of an ignition interlock device. You can choose to install an ignition interlock device for the entire 24 months to regain driving privileges immediately.

NOTE: At the end of the Modified License period you must reinstate your driver's license in order to start your condition of reinstatement.

*Program lengths listed below/above may be different on a case-by-case situation so you are encouraged to contact your Installation Authority for your specific program length.

SECOND OFFENSE*

If you are arrested for a 2nd drug or alcohol related driving offense within ten years, your license will be suspended. You may apply for a Modified License for 12 months. Following that, you will have a Condition of Reinstatement period of 48 months, requiring the installation of an ignition interlock device. You can choose to install an ignition interlock device for the entire 60 months to regain driving privileges immediately.

NOTE: At the end of the Modified License period you must reinstate your driver's license in order to start your condition of reinstatement.

*Program lengths listed below/above may be different on a case-by-case situation so you are encouraged to contact your Installation Authority for your program length.



A BETTER WAY OF LIFE

Installing an ignition interlock will allow you to keep your job and your life the way it was before your DUI.

THIRD OFFENSE*

If you are arrested for a 3rd drug or alcohol related driving offense within ten years, your license will be suspended. You may apply for a Modified License for three years. Following that, you will have a Condition of Reinstatement period of five years, requiring the installation of an ignition interlock device. You can choose to install an ignition interlock device for the entire eight years to regain driving privileges immediately.

NOTE: At the end of the Modified License period you must reinstate your driver's license in order to start your condition of reinstatement.

*Program lengths listed below/above may be different on a case-by-case situation so you are encouraged to contact your Installation Authority for your program length.

ZERO TOLERANCE FOR MINORS

Oklahoma is a zero tolerance state. If you are under the age of 21 and are caught driving with a Blood Alcohol Content (BAC) of over .02%, you will be convicted of a drug or alcohol related driving offense and your license will be suspended. Your suspension time and Condition of Reinstatement will then follow the guidelines of all offenses in the state of Oklahoma.

INSTALLATION VERIFICATION

After you've installed your device and paid all applicable fees, you will receive an installation verification form from your chosen ignition interlock installer. You are required to provide your Installation Verification form to your Installation Authority. If you are outside the Inclusion Zone, you must complete the Application for Foreign Installation Verification and submit this form to the BOT with any applicable fees. Upon receipt, the BOT will review your application and either approve or deny it. If approved, the installation verification will be forwarded to the Installation Authority listed. If denied, the application will be returned to your mailing address.



CALIBRATIONS

The state of Oklahoma requires that all ignition interlock devices be calibrated every 65 days. A calibration consists of exchanging your current device for a new one. During calibration, your device will be checked for defects and information will be downloaded and forwarded to the proper monitoring authority, if required. The calibration process ensures that devices continue giving accurate BrAC readings when breath samples are submitted.

Intoxalock auto-calibrations

Intoxalock offers its customers auto-calibrations in the state of Oklahoma. When it is time for calibration, the LED screen will display a message alerting you it is time to exchange devices. Intoxalock will automatically send a new one to your selected service center. You simply need to visit your service center during the allotted calibration period and the technician can quickly exchange the device.

LAST YEAR, INTOXALOCK
HELPED OVER 90,000 DRIVERS
GET BACK ON THE ROAD SAFELY
AND RESPONSIBLY.

CERTIFIED LOCATIONS

Visit www.Intoxalock.com/Find-an-Installation-Location and enter your zip code to find the service center locations nearest to you.



INTOXALOCK IS THE FASTEST WAY TO REGAIN YOUR LICENSE

5 REASONS TO CALL INTOXALOCK

- 1 Up to 70% fewer required calibrations than competitors
- 2 20 years of ignition interlock leadership
- 3 24/7 customer service support
- 4 Most reliable technology in the industry
- 5 Second-to-none in customer service*

*Given A+ rating from Better Business Bureau and the only ignition interlock company to receive 4-1/2 stars from Trustpilot (Independent site)

WHAT YOU CAN EXPECT

- A patient and friendly customer service agent
- Specialists in Oregon regulations
- Free home delivery
- Convenient service center locations
- 24/7 customer support

Call! **(888) 283-6148** Hablamos Español

Experts in Oklahoma regulations are ready to answer your questions.

To learn more about the Oklahoma ignition interlock program scan this QR code or visit www.IntoxalockIID.com/OK



Intoxalock[®]
Helping people to live and drive responsibly

