



Regain your license in Arizona

with a state certified ignition interlock

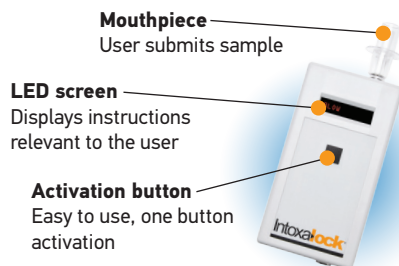
HOW CAN I GET MY LICENSE BACK?

If you are reading this brochure, it is likely that you or a loved one has been pulled over for Driving Under the Influence (DUI). Getting an ignition interlock device installed in your vehicle is an important step in regaining your license in Arizona. This brochure will take you through all the necessary steps to regain your license and assist you in getting back on the road quickly and legally.*

*State laws can change at any time. The information in this brochure is just a guideline. For the most up to date information, visit www.azdot.gov/mvd/driver-services/ignition-interlock

WHAT IS AN IGNITION INTERLOCK?

An ignition interlock device integrates breath alcohol testing with your vehicle's ignition system. Prior to starting your vehicle, you will need to submit a breath sample into the hand held portion of the device that tests for the presence of alcohol. If your Breath Alcohol Concentration (BrAC) is below Arizona's ignition interlock limit (.02), your vehicle will start. If alcohol is detected, your vehicle will not start until a passing sample has been provided.



LAST YEAR, INTOXALOCK
HELPED OVER 90,000 DRIVERS
GET BACK ON THE ROAD SAFELY
AND RESPONSIBLY.

SPECIAL RESTRICTED DRIVER LICENSE

Restricted driving privileges may be issued if the suspension or revocation was a result of a DUI violation and your record indicates no other disqualifying actions.

Special restricted license:

In cases involving driver license suspension or revocation resulting from a DUI-related violation dated on or after February 1st, 2006, you may be eligible for a special restricted driver license if you meet the following requirements:

- Complete at least 30 days of the mandated suspension period
- Contact the Motor Vehicle Division (MVD) by phone and verify eligibility
- Install a certified ignition interlock device on your vehicle and provide proof to the MVD with a Verification of Installation form
- Comply with mandatory alcohol treatment programs (if required) and submit proof of completion to the MVD
- Provide proof of Future Financial Responsibility (SR22 insurance) to any MVD office if required
- Pay all applicable fees (personal checks are not accepted)

Driving restrictions:

A special restricted driver license is valid only during the period of suspension or revocation and allows vehicle operation between these locations:

- Place of residence and employment during specified periods of time
- Place of residence, place of employment and secondary or postsecondary school according to your employment and educational schedule
- Place of residence and a treatment or screening facility for scheduled appointments
- Place of residence and your probation officer's office for scheduled appointments
- Place of residence and your physician or other health-care professional's office
- Place of residence and a certified ignition interlock device service center



WE PROUDLY MAINTAIN A 4 ½
STAR CUSTOMER SATISFACTION
RATING ON TRUSTPILOT.

SPECIAL RESTRICTED PERMIT

If you are eligible, a special restricted permit will automatically be mailed to your home of record 22-30 days after the suspension period begins (if you did not request a MVD hearing). However, a minimum of 30 days of the suspension period must be served before the restricted driving privilege begins. This restricted permit is issued for travel to and from work, on the job, to and from school, and to and from a treatment center. If you requested a MVD hearing and the suspension was upheld, you may obtain a restricted permit at any MVD office after 30 days of your suspension have been served (if eligible).

Visit www.azdot.gov/mvd/hours-and-locations to find your nearest MVD office.

LICENSE SUSPENSION AND REVOCATION

To reinstate your suspended license,* you must:

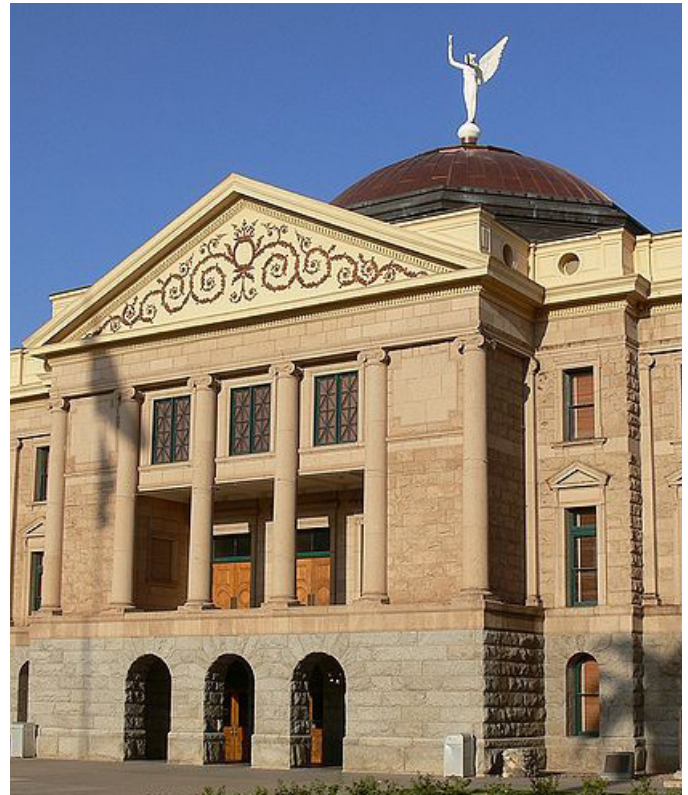
- If required, install a certified ignition interlock device on your vehicle and provide proof to the MVD with a Verification of Installation form
- Provide proof of Future Financial Responsibility (SR22 insurance) to any MVD office. If you have a(n):
 - Court-directed suspension for DUI (If suspended by MVD [not court-directed] and it's your first suspension, then SR22 insurance is not needed.)
 - Implied-consent suspension due to refusal to complete a drug or alcohol test
- Pay all applicable fees (Personal checks are not accepted)

To reinstate your revoked license,** you must:

- Install a certified ignition interlock device on your vehicle and provide proof to the MVD with a Verification of Installation form
- Comply with mandatory alcohol treatment programs (if required) and submit proof of completion to the MVD
- Provide proof of Future Financial Responsibility (SR22 insurance) to any MVD office if required
- Pay all applicable fees (Personal checks are not accepted)
- Fill out and complete all sections of the MVD revocation packet

*Suspension is the temporary removal of your privilege to drive. **Revocation is the termination of your privilege to drive.

**Revocation is the termination of your privilege to drive.



CALIBRATIONS

The State of Arizona requires all ignition interlock devices be calibrated every 30 days for the first three months, then every 60 days for the remainder of your requirement. A calibration consists of exchanging your current device for a newly calibrated one, ensuring accurate and consistent testing.

CERTIFIED INSTALLATION LOCATIONS

Intoxalock has over 40 authorized service center locations throughout the state, including Phoenix and Tucson. We also offer mobile service throughout the state.

Visit www.Intoxalock.com/Find-an-Installation-Location and enter your zip code to find the service center locations nearest to you.

ABOUT INTOXALOCK

Intoxalock has been manufacturing ignition interlocks for over 20 years. We were the first company to use fuel cell technology and continue to be an industry leader in reliability, customer service and technology.



- Over 90,000 customers served annually
- Over 1,800 service centers nationwide
- 20 years of industry leadership



INTOXALOCK IS THE FASTEST WAY TO REGAIN YOUR LICENSE

5 REASONS TO CALL INTOXALOCK

- 1 1,800 service centers nationwide
- 2 20 years of ignition interlock leadership
- 3 Quick exchange calibrations save time & money
- 4 Most reliable technology in the industry
- 5 Second-to-none in customer service*

*Given A+ rating from Better Business Bureau and the only ignition interlock company to receive 4-1/2 stars from Trustpilot (Independent site)

WHAT YOU CAN EXPECT

- A patient and friendly customer service agent
- Specialists in Arizona regulations
- Affordable pricing
- Convenient service center locations
- 24/7 customer support

Call! **(888) 283-6148** Hablamos Español

Experts in Arizona regulations are ready to answer your questions.

To learn more about the Arizona ignition interlock program scan this QR code or visit www.IntoxalockIID.com/AZ



Intoxalock[®]
Helping people to live and drive responsibly

